



2018 SKATE CINCINNATI COMPETE USA COMPETITION APRIL 28, 2018

- Hosted By:** The Figure Skating Club of Cincinnati
- Sanctioned By:** US Figure Skating # 27672
- Event Location:** Indian Hill Winter Club
10005 Fletcher Road, Camp Dennison OH 45111
(513) 576-9444
- Competition Chairs:** Mimzi Staten - skatecincinnati@skatecincinnati.org
- Website:** <http://skatecincinnati.org/tests-and-competitions/skate-cincinnati/>

The 2018 Skate Cincinnati competition will be conducted in accordance with the rules and regulations of U.S. Figure Skating, as set forth in the current rulebook, as well as any pertinent updates which have been posted on the U.S. Figure Skating website.

This competition is open to all eligible, restricted, reinstated or readmitted persons as defined by the Eligibility Rules, and is a currently registered member of a U.S. Figure Skating member club, a collegiate club or an individual member in accordance with the current rulebook. Please refer to the current rulebook for non-U.S. Citizens.

ELIGIBILITY/TEST LEVEL:

Test level: Competition level is the highest test passed as of the entry deadline, in the discipline the skater is entering. All **Snowplow Sam and Basic Skills 1-6** skaters must skate at highest level passed or one level higher and no official U.S. Figure Skating tests may have been passed including moves in the field or individual dances. For the **Free Skate 1-6, Test Track and Well Balanced levels**, eligibility will be based only upon highest free skate test level passed (moves in the field test level will not determine skater's competitive level). Entrants may skate one level above that for which they qualify, but they may not skate down in any event.

Age restrictions/requirements: Skaters entering juvenile free skate events (Well Balanced Program) must be under 13 years of age at the close of entries. Skaters entering open juvenile free skate events (Well Balanced Program), must be at least 13 years of age at the close of entries.

Skaters entering beginner-pre-juvenile events will be divided as closely as possible by age, should the number of entries warrant more than one group.



ENTRIES: A secure, online registration is available until **11:59pm March 30, 2018** at <http://comp.entryeeze.com/Home.aspx?cid=294>. Skaters may mail a paper entry form instead, but forms must be **RECEIVED BY March 30, 2018**. The entry fee must be included with the completed application. Late entries may be accepted at the discretion of the competition committee and referee, and will be subject to a \$20 late fee. Skaters wishing to change their events after the close of entries may be assessed a \$20 charge.

General Entry Fees

Basic Skills First Event	\$40.00
Basic Skills Additional Events	\$20.00 each
First Event – Non-Basic Skills	\$60.00
First Duet Event	\$30.00 each person
Additional Non-Basic Skills Events	\$25.00 each

REFUND POLICY: Entry fees will not be refunded after March 30th, 2018 unless no competition exists or the event is canceled. There will be no refunds for medical withdrawals. The online processing fees are not refundable. Checks returned for non-sufficient funds and contested credit card charges will be issued a \$20 fee. Payment of the fee will be required before the skater is allowed to participate in practice ice or events. Notification of competition and practice ice times will be available by email and web.

FACILITIES: The competition will be held at Indian Hill Winter Club, which has dressing rooms, a full-service snack bar, and free parking. IHWC is located at 10005 Fletcher Road, Camp Dennison OH 45111 and their phone number is (513) 576-9444. The ice surface measures 200' by 85'. Admission to Skate Cincinnati is free.

MUSIC: The skater must provide their own music for all Free Skate and Showcase events. The official competition music must be turned in at the registration table at the time of check-in. A duplicate CD should be readily available. Music may be picked up at the registration table following each event. Every reasonable care will be taken, but the organizing committee cannot be responsible for CDs left at the end of the competition. Please have separate CDs for practice and competition.

If you would like to use the SEGL music for a Snowplow Sam or Basic 1-6 program event that is permissible. If you need a copy of it find it on the Skate Cincinnati page using the link below. Right-click on the file to download:
<http://skatecincinnati.org/tests-and-competitions/skate-cincinnati/>

LIABILITY: U.S. Figure Skating, The Figure Skating Club of Cincinnati and The Indian Hill Winter Club accept no responsibility for injury or damage sustained by any participant in this competition. This is in accordance with Rule 1600 of the official U.S. Figure Skating Rulebook.

JUDGING SYSTEM: The 6.0 Majority Judging System will be used for all events.

REGISTRATION: Registration will be open one hour before the first event and run through the last event of the day. The registration table will be located in the rink lobby area at the Indian Hill Winter Club. Please register promptly upon arrival.

LOCKER ROOMS AND CHANGING AREAS: This event will be following the Locker Rooms and Changing Area policy included in the SafeSport Handbook.

PRACTICE ICE: There will be practice ice available beginning Saturday, April 28, 2018. Skaters may purchase practice ice online or with their paper entry form at the time of registration. Practice ice is \$12.00 per 20 minute session if purchased by March 30th, 2018. Skaters may also purchase practice ice at a walk-on rate of \$15 per 20 minutes if space is still available. Practice ice may be cancelled if an insufficient number of reservations are received. No music will be played during practice ice

Skaters who pre-register will receive an email approximately 1-2 weeks before the competition informing them to select their desired practice ice time online. The practice ice selection is first-come, first-served, and those who pre-register will be allowed to select times first. All skaters registered for the competition will receive a confirmation message from the EntryEeze Online Registration system with a PIN. Use your PIN and US Figure Skating number to select practice ice time. After skaters who have pre-registered have an opportunity to select their practice ice times, all other skaters will have the opportunity to purchase and select practice ice at the "walk-on" rate. Phone or email reservations will not be accepted.

PHOTOGRAPHY/VIDEOGRAPHY: Photography and/or video services may be available for purchase. Flash photography is not allowed in the arena during the warm-up or during the competition, as it is a safety hazard to the skaters.

AWARDS: Medals will be presented to 1st through 4th places. Awards will be presented off the ice to all participants after final results have been tabulated. An awards schedule will be posted near the results area.

OFFICIAL NOTICES: An official bulletin board will be maintained at the Registration Desk. It is the responsibility of each competitor, parent and coach to check the bulletin board frequently for any schedule changes and/or additional information. Skaters are requested to arrive 45 minutes prior to the scheduled time of their event. A tentative schedule of events will be posted prior to the competition.

INFORMATION REGARDING COACHES:

U.S. Figure Skating Rule MR 5.11 Coach Registration

In order to be granted access to work within U.S. Figure Skating sanctioned activities, each coach must complete the following requirements on an annual basis by July 1:

- A. Must be a current full member of U.S. Figure Skating - either through a member club or as an individual member;
- B. Must complete the coach registration process through the U.S. Figure Skating Members Only site, submit proper payment for the annual registration fee of \$30 and, if 18 years of age or older, successfully pass the background screen.
- C. Must complete the appropriate CER courses (A, B, C or D) depending on the highest level of students being coached as of July 1. See rule MR 5.12.
- D. Must submit proof of current general liability insurance with limits of \$1 million per occurrence/\$5 million aggregate.

For Learn to Skate USA ONLY coaches - Any person, 18 and older, instructing a Learn to Skate USA Program must have successfully passed the annual background screen, be registered as a Learn to Skate USA instructor and completed the Learn to Skate USA Instructor Certification or U.S. Figure Skating Coach Compliance.

The local organizing committee/club will have a list of compliant coaches who are cleared for a credential at the competition. Coaches will need to check in at the event registration desk and show a government issued photo I.D. to receive a credential.

If a coach cannot provide a photo I.D. and is not on the list or cannot produce the necessary documents, he or she will not be allowed a credential – no exceptions. We strongly urge *all* coaches to have their cards with them. Non-credentialed coaches will not be permitted in the designated coaching area at rink side during events including practice sessions. Coaching at U.S. Figure Skating events without proper registration is an ethics violation which is reported to U.S. Figure Skating and PSA.

For more information regarding Coach Compliance, please refer to:

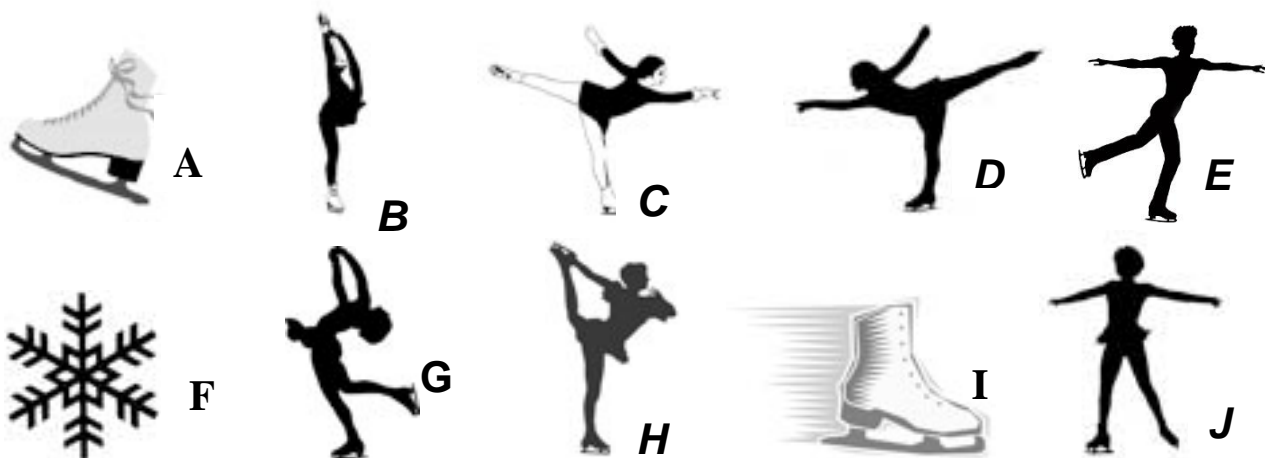
<http://usfsa.org/story?id=84159>

CONTACT INFO: If you have questions, please contact Mimzi Staten at skatecincinnati@skatecincinnati.org.

ADDITIONAL INFORMATION:

SCHEDULES: A final competition and practice ice schedule will be posted at <http://skatecincinnati.org/tests-and-competitions> approximately 10 days prior to the competition. The competition schedule is set by the referee, and no changes will be made to the schedule once it is announced unless an error has been made by the referee.

EVENT PROGRAM: An official Skate Cincinnati 2018 program will be available for a nominal fee. You may also place a personal or "Good Luck" ad in the program for \$6. If desired, you may choose one of the graphics below to accompany your message.



To place a "Good Luck" ad, please use the enclosed form on the last page of this announcement, or through the "merchandise" tab on the online registration system. Please note that late entries may not appear in the official program.

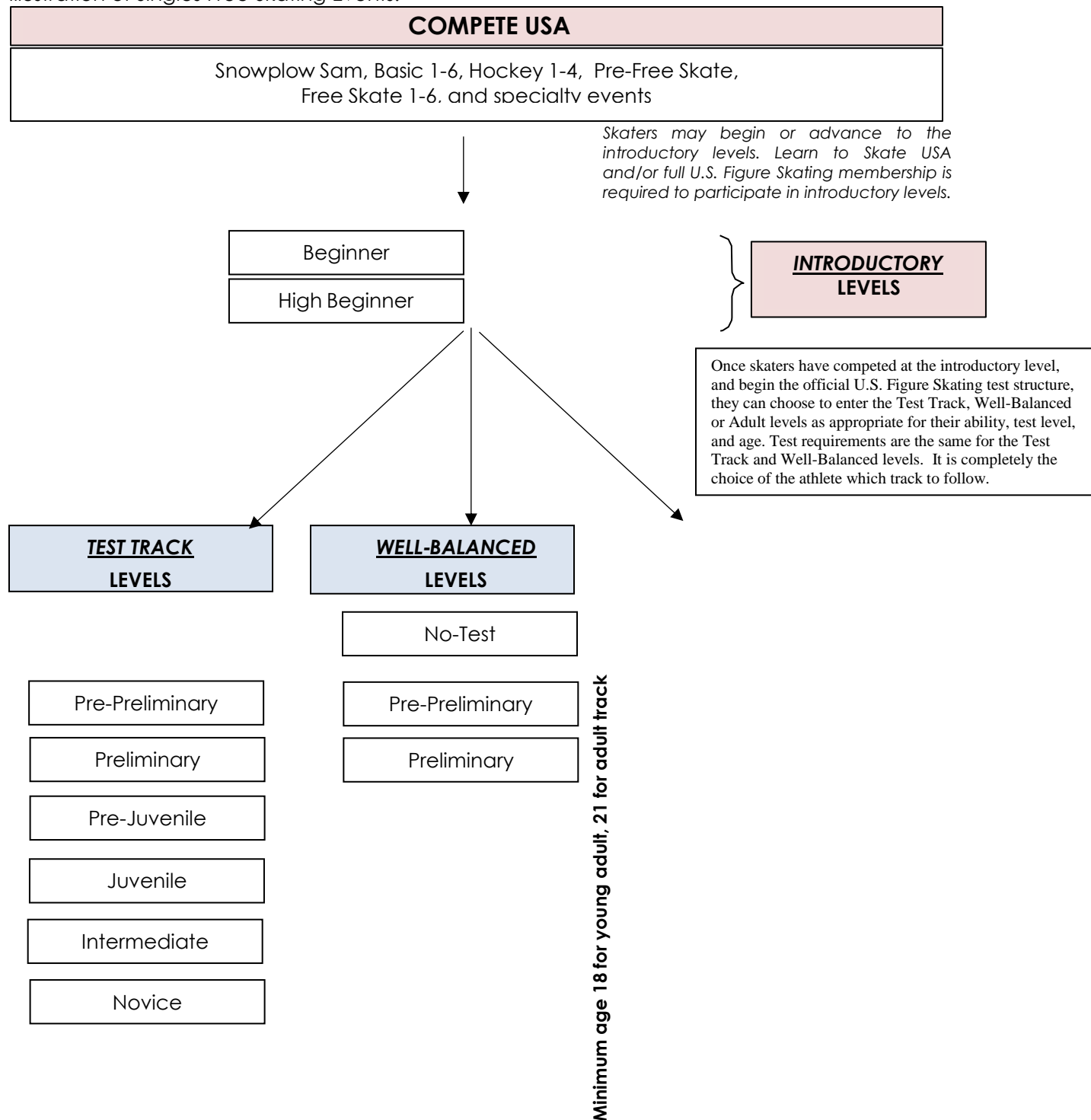
LODGING: Please visit the competition webpage for more information about lodging, special rates, and host hotels: <http://skatecincinnati.org/tests-and-competitions/skatecincinnati/>

SECTION 2: Events Offered

SINGLES FREE SKATING EVENTS

See current rulebook or click [here](#) for current rules and requirements.

Illustration of Singles Free Skating Events:



This event is a standard U.S. Figure Skating Nonqualifying Competition
LG/7-9-17



BASIC SKILLS EVENTS

Event: SNOWPLOW SAM – BASIC 6 ELEMENTS

Each skater will perform each element when directed by a judge or referee. All skaters perform first element before moving on to the next and so on.

- To be skated on 1/3 to 1/2 ice.
- No music.
- **All elements must be skated in the order listed.**

Level	Time	Skating rules/standards
Snowplow Sam	1:00 max.	<ul style="list-style-type: none"> • March followed by a two-foot glide and dip • Forward two-foot swizzles, 2-3 in a row • Forward snowplow stop • Backward wiggles, 2-6 in a row
Basic 1	1:00 max.	<ul style="list-style-type: none"> • Forward two-foot glide and dip • Forward two-foot swizzles, 6-8 in a row • Beginning snowplow stop on two-feet or one-foot • Backward wiggles, 6-8 in a row
Basic 2	1:00 max.	<ul style="list-style-type: none"> • Forward one-foot glide, either foot • Scooter pushes, right and left foot, 2-3 each foot • Moving snowplow stop • Two-foot turn in place, forward to backward • Backward two-foot swizzles, 6-8 in a row
Basic 3	1:00 max.	<ul style="list-style-type: none"> • Beginning forward stroking showing correct use of blade • Forward ½ swizzle pumps on a circle, either clockwise or counter clockwise, 4-6 consecutive • Forward slalom • Beginning backward one-foot glide, either foot • Moving forward to backward two-foot turn on a circle
Basic 4	1:00 max.	<ul style="list-style-type: none"> • Backward one-foot glides, right and left • Forward outside edge on a circle, clockwise or counter clockwise • Forward crossovers, 4-6 consecutive, both directions • Beginning two-foot spin, maximum 2-4 revolutions • Backward ½ swizzle pumps on a circle, one direction only
Basic 5	1:00 max.	<ul style="list-style-type: none"> • Backward outside edge on a circle, clockwise or counterclockwise • Backward crossovers, 4-6 consecutive, both directions • Advanced two-foot spin, maximum 4-6 revolutions • Forward outside three-turn, right and left • Hockey stop
Basic 6	1:00 max.	<ul style="list-style-type: none"> • Forward inside three-turn, right and left • Bunny Hop • Forward spiral on a straight line, right or left • Beginning one-foot spin, 2-4 revolutions, optional free leg held position and entry • T-stop, right or left

Event: PRE-FREE SKATE – FREE SKATE 2 COMPULSORY

Format: In simple program form, using a limited number of connecting steps, the skating order of the required elements is optional.

- To be skated on ½ ice.
- No music is allowed.
- The skater must demonstrate the required elements and may use any additional elements from previous levels. Bonus skills from the same level or below are allowed but will not be judged elements.
- A 0.2 deduction will be taken for each element performed from a higher level.

Level	Time	Skating rules/standards
Pre-Free Skate	1:15 max	<ul style="list-style-type: none"> • Forward inside open Mohawk from a standstill position (R to L and L to R) • Two forward crossovers into a forward inside Mohawk, step down and cross behind, step into one backward crossover and step to a forward inside edge, clockwise and counterclockwise • One-foot upright spin, optional entry and free-foot position (minimum three revolutions) • Mazurka • Waltz jump
Free Skate 1	1:15 max.	<ul style="list-style-type: none"> • Forward power stroking, 4-6 consecutive strokes • Backward outside three-turns, right and left • Upright spin, entry from backward crossovers - minimum 4-6 revolutions • Toe loop • Half flip jump
Free Skate 2	1:15 max.	<ul style="list-style-type: none"> • Alternating forward outside and inside spirals on a continuous axis (2 sets) • Backward inside three-turns, right and left • Beginning back spin, up to two revolutions • Half Lutz • Salchow jump

Event: SNOWFLOW SAM – BASIC 6 PROGRAM WITH MUSIC

Format: The skating order of the required elements is optional. The elements are not restricted as to the number of times the element is executed or length of glides, number of revolutions, etc., unless otherwise specified.

- To be skated on full or half ice.
- Skaters will use their own music. Skaters who wish to perform half ice and to the SEGL provided music may do so without penalty but must bring their own copy of the music. If you need a copy of the SEGL provided music, find it on the Skate Cincinnati page using the link below. Right-click on the file to download: <http://skatecincinnati.org/tests-and-competitions/skate-cincinnati/>
- The skater may use elements from a previous level.
- A 0.2 deduction will be taken for each element performed from a higher level. Bonus skills from the same level or below are allowed but will not be judged elements.

Level	Time	Skating rules/standards
Snowplow Sam	1:10 max.	<ul style="list-style-type: none"> • March followed by a two-foot glide and dip • Forward two-foot swizzles, 2-3 in a row • Forward snowplow stop • Backward wiggles, 2-6 in a row
Basic 1	1:10 max.	<ul style="list-style-type: none"> • Forward two-foot glide and dip • Forward two-foot swizzles, 6-8 in a row • Beginning snowplow stop on two-feet or one-foot • Backward wiggles, 6-8 in a row
Basic 2	1:10 max.	<ul style="list-style-type: none"> • Forward one-foot glide, either foot • Scooter pushes, right and left foot, 2-3 each foot • Moving snowplow stop • Two-foot turn in place, forward to backward • Backward two-foot swizzles, 6-8 in a row
Basic 3	1:10 max.	<ul style="list-style-type: none"> • Beginning forward stroking showing correct use of blade • Forward ½ swizzle pumps on a circle, either clockwise or counter clockwise, 4-6 consecutive • Forward slalom • Beginning backward one-foot glide, either foot • Moving forward to backward two-foot turn on a circle
Basic 4	1:10 max.	<ul style="list-style-type: none"> • Backward one-foot glides, right and left • Forward outside edge on a circle, clockwise or counter clockwise • Forward crossovers, 4-6 consecutive, both directions • Beginning two-foot spin, maximum 2-4 revolutions • Backward ½ swizzle pumps on a circle, one direction only
Basic 5	1:10 max.	<ul style="list-style-type: none"> • Backward outside edge on a circle, clockwise or counterclockwise • Backward crossovers, 4-6 consecutive, both directions • Advanced two-foot spin, maximum 4-6 revolutions • Forward outside three-turn, right and left • Hockey stop
Basic 6	1:10 max.	<ul style="list-style-type: none"> • Forward inside three-turn, right and left • Bunny Hop • Forward spiral on a straight line, right or left • Beginning one-foot spin, 2-4 revolutions, optional free leg held position and entry • T-stop, right or left

Event: PRE-FREE SKATE – FREE SKATE 2 PROGRAM WITH MUSIC

Format: The skating order of the required elements is optional. The elements are not restricted as to the number of times an element is executed, length of glides, number of revolutions, etc., unless otherwise stated. Connecting steps and transitions should be demonstrated throughout the program.

- To be skated on full ice.
- The skater must demonstrate the required elements and may use but is not required to use any additional elements from previous levels. Bonus skills from the same level or below are allowed but will not be judged elements.
- A 0.2 deduction will be taken for each element performed from a higher level.
- Time 1:40 max.

Level	Time	Skating rules/standards
Pre-Free Skate	1:40 max	<ul style="list-style-type: none"> • Two forward crossovers into a forward inside Mohawk, step down and cross behind, step into one backward crossover and step to a forward inside edge, clockwise and counterclockwise • One-foot upright spin, optional entry and free-foot position (minimum three revolutions) • Mazurka • Waltz jump
Free Skate 1	1:40 max	<ul style="list-style-type: none"> • Forward power stroking, 4-6 consecutive strokes • Upright spin, entry from backward crossovers - minimum 4-6 revolutions • Toe loop jump • Half flip jump
Free Skate 2	1:40 max.	<ul style="list-style-type: none"> • Alternating forward outside and inside spirals on a continuous axis (2 sets) • Beginning back spin, up to two revolutions • Half Lutz • Salchow jump

Event: BASIC 1 – FreeSkate 2 SHOWCASE PROGRAM

Format: Groups will be divided by number of entries and ages if possible. Skaters must enter at the same level as their free skate event or highest test level of skater's in the group ensemble or production number. If a free skate event is not being entered, skaters must enter at their current test level or one level higher. Vocal music is permitted. 6.0 Judging will be used. Deductions will be made for skaters including technical elements not permitted in the event description.

Showcase categories may include:

- Levels can be subdivided, if necessary, depending on entry numbers and event set up
- Dramatic entertainment: Showcase program utilizing intense emotional skating quality to depict choreographic theme.
- Light entertainment: Showcase program emphasizing such choreographic expressive qualities such as comedy, love and mime while incorporating skating skills.
- Duets: Theatrical/artistic performances by any competitors.
- Mini production ensembles: Theatrical performances by three to seven competitors.
- Production ensembles: Theatrical performances by eight to 30 skaters. Theater On Ice teams are eligible as production ensembles. NOTE: Skaters may enter only one each duet, mini production or production event.

General event parameters:

Show costumes are permitted, as long as they do not touch or drag on the ice. Props and scenery must be placed and removed by unaided singles and duet competitors within one minute and by unaided ensemble contestants within two minutes for setup and two minutes for removal. A 0.2 deduction will be assessed by the referee against each judge's mark for each five seconds in excess of the time allowed for the performance, for handling props and scenery and for scenery assistance.

Performances will be judged from an entertainment standpoint, for theatrical qualities. Technical skating skills and difficulty will not be rewarded as such; however, skating must be the major element of the performance and be of sufficient quality to support the selected theatrical elements. Unintended falls, poorly executed skating elements and obvious losses of control will reduce contestant's marks. Jump difficulty is not rewarded in showcase; therefore jumps, if choreographed, should be performed with style, flow and confidence. Theatrical elements evaluated will include energy, poise, acting, pantomime, eye contact, choreography, form/extension and the use of props and ice.

* For specific guidelines regarding the conduct of Showcase competitions, refer to the Nonqualifying Showcase Guidelines posted on www.usfigureskating.org.

LEVEL	ELEMENTS	QUALIFICATIONS	PROGRAM LENGTH
Basic 1-6	Elements only from Basic 1-6 curriculum	May not have passed any higher than Basic 6 level.	Time: 1:00 max.
Pre-Free Skate- Free Skate 2	3 jump maximum. ½ rotation jumps only, plus the following full rotation jumps: Salchow and toe loop.	May not have passed any official U.S. Figure Skating free skate tests.	Time: 1:30 max.

FREE SKATE EVENTS

Event: INTRODUCTORY FREE SKATE PROGRAM

General event parameters:

- Skaters will skate to the music of their choice.
- Level will be determined by the highest free skate test passed. Skaters may compete at the highest level they have passed, or skate up to one level higher.
- Minimum number of spin revolutions are in parentheses following the spin description. Revolutions must be in position.

Level	Jumps	Spins	Step Sequences	Qualifications
Beginner 1:40 Maximum	Max. 5 jump elements: <ul style="list-style-type: none"> • Jumps with no more than one-half rotation (front to back or back to front). • Max. 2 jump sequences • Max. 2 of any same jump 	Max. 2 spins: <ul style="list-style-type: none"> • Two upright spins, no change of foot, no flying entry (Min. 3 revolutions) 	Connecting moves and steps should be demonstrated throughout the program	Skaters may not have passed tests higher than U.S. Figure Skating Learn to Skate USA free skating badge tests
High Beginner 1:40 Maximum	Max. 5 jump elements: <ul style="list-style-type: none"> • Jumps with no more than one-half rotation (front to back or back to front including half-loop) • Single rotation jumps: Salchow and toe loop only. • Max. 2 jump combinations or sequences • Max. 2 of any same type jump. 	Max. 2 spins: <ul style="list-style-type: none"> • Two upright spins, change of foot optional, no flying entry (Min. 3 revolutions) 	Connecting moves and steps should be demonstrated throughout the program	Skaters may not have passed tests higher than U.S. Figure Skating Learn to Skate USA free skating badge tests

Event: Test Track Free Skate – Introductory through Novice levels

General event parameters:

1. Skaters may not enter both a Well-Balanced Free Skate event and a Test Track Free Skate event at the same nonqualifying competition.
2. Skaters will skate to the music of their choice. Vocal music is permitted at all levels.
3. Level will be determined by the highest Free Skate test passed. Skaters may compete at the highest level they have passed, or “skate up” to one level higher.
4. Minimum number of spin revolutions are in () following the spin description. Revolutions must be in position.
5. The following deductions will be taken:
 - 0.1 from each mark for each technical element included that is not permitted in the event description.
 - 0.2 from the technical mark for each extra element included.
 - 0.1 from the technical mark for any spin that is less than the required minimum revolutions.

Level	Jumps	Spins	Step Sequences	Qualifications
Beginner 1:40 maximum	<i>Max. 5 jump elements:</i> <ul style="list-style-type: none"> • Jumps with no more than one-half rotation (front to back or back to front). • Max. 2 jump sequences • Max. 2 of any same jump 	<i>Maximum of 2 spins:</i> <ul style="list-style-type: none"> • Two upright spins, no change of foot, no flying entry (Min. 3 revolutions) 	Connecting moves and steps should be demonstrated throughout the program	Skaters may not have passed any U.S. Figure Skating free skate tests
High Beginner 1:40 maximum	<i>Max. 5 jump elements:</i> <ul style="list-style-type: none"> • Jumps with no more than one-half rotation (front to back or back to front including half-loop) • Single rotation jumps: Salchow and toe loop only. • Max. 2 jump combinations or sequences • Max. 2 of any same type jump. 	<i>Maximum of 2 spins:</i> <ul style="list-style-type: none"> • Two upright spins, change of foot optional, no flying entry (Min. 3 revolutions) 	Connecting moves and steps should be demonstrated throughout the program	Skaters may not have passed any U.S. Figure Skating free skate tests

Level	Jumps	Spins	Step Sequences	Qualifications
Pre-Preliminary 1:40 maximum	<p><i>Maximum of 5 jump elements:</i></p> <ul style="list-style-type: none"> Jumps with not more than one-half rotation (<i>front to back or back to front including half-loop</i>) Single rotation jumps: Salchow, toe loop and loop only. Max. 2 jump combinations or sequences Max. 2 of any same type jump 	<p><i>Maximum of 2 spins:</i></p> <ul style="list-style-type: none"> Two spins of a different nature, one position only. No change of foot, no flying entry. (Min. 3 revolutions) 	Connecting moves and steps should be demonstrated throughout the program	Skaters may not have passed tests higher than U.S. Figure Skating pre-preliminary free skate test
Preliminary 1:30 +/- 10 sec.	<p><i>Maximum of 5 jump elements:</i></p> <ul style="list-style-type: none"> Jumps with not more than one rotation (no Axels). Max. 2 jump combinations or sequences Max. 2 of any same type jump 	<p><i>Maximum of 2 spins:</i></p> <ul style="list-style-type: none"> One spin in one position; no change of foot, no flying entry. (Min. 3 revolutions) One spin consisting of a front scratch to back scratch; exit on spinning foot not mandatory. (Min. 3 revolutions per foot) 	Connecting moves and steps should be demonstrated throughout the program	Skaters must have passed at least the U.S. Figure Skating pre-preliminary free skate test but may not have passed tests higher than the preliminary free skate test
Pre-Juvenile 2:00 +/- 10 sec.	<p><i>Maximum of 5 jump elements:</i></p> <ul style="list-style-type: none"> Jumps with not more than one rotation (no Axels). Max. 2 jump combinations or sequences Max. 2 of any same type jump 	<p><i>Maximum of 2 spins:</i></p> <ul style="list-style-type: none"> One spin in one position, no change of foot (Min. 3 revolutions) One combination spin: forward camel spin to forward sit spin; change of foot optional (Min. 6 revolutions). Spins may not fly. 	One step sequence fully utilizing ice surface	Skaters must have passed at least the U.S. Figure Skating preliminary free skate test but may not have passed tests higher than pre-juvenile free skate test

<p>Juvenile</p> <p>2:20 +/- 10 sec.</p>	<p><i>Maximum of 5 jump elements:</i></p> <ul style="list-style-type: none"> • Any single jumps, including Axel, are permitted. • Max. 2 jump combinations or sequences • Max. 2 of any same type jump 	<p><i>Maximum of 2 spins:</i></p> <ul style="list-style-type: none"> • One solo spin in one position, no change of foot (Min. 4 revolutions). • One combination spin with one change of foot and at least one change of position, must include two of the basic spin positions. (Min. 4 revolutions per foot) • <i>Only solo spin may fly</i> 	<p>One step sequence fully utilizing ice surface</p>	<p>Skaters must have passed at least the U.S. Figure Skating pre-juvenile free skate test but may not have passed tests higher than juvenile free skate test</p>
<p>Intermediate</p> <p>2:40 +/- 10 sec.</p>	<p><i>Maximum of 6 jump elements:</i></p> <ul style="list-style-type: none"> • Any single jumps. • Double jumps permitted: double Salchow and double toe loop. • Maximum of 3 jump combinations or sequences • Max. 2 of any same type jump 	<p><i>Maximum of 2 spins:</i></p> <ul style="list-style-type: none"> • One must be a flying spin (min 5 revolutions), • One must be a combination spin with at least one change of foot and at least one change of position (minimum 4 revolutions per foot). 	<p>One step sequence fully utilizing ice surface</p>	<p>Skaters must have passed at least the U.S. Figure Skating juvenile free skate test but may not have passed tests higher than intermediate free skate test</p>
<p>Novice</p> <p>Ladies: 3:00 +/- 10 sec. Men: 3:30 +/- 10 sec.</p>	<p><i>Maximum of 7 jump elements for men and 6 for ladies:</i></p> <ul style="list-style-type: none"> • Any single jumps. • Double jumps permitted: double Salchow, double toe loop and double loop. • Maximum of 3 jump combinations or sequences • Max. 2 of any same type jump 	<p><i>Maximum of 3 spins, of a different nature:</i></p> <ul style="list-style-type: none"> • One must be a combination spin with at least one change of foot and at least one change of position (min 5 revs per foot) • The other spins are the option of the skater (min 6 revolutions per foot) • <i>All spins may fly</i> 	<p>One step sequence or spiral sequence fully utilizing ice surface</p> <p>(see rule 4104 & 4105 for remarks)</p>	<p>Skaters must have passed at least the U.S. Figure Skating intermediate free skate test but may not have passed tests higher than novice free skate test</p>

Event: Well Balanced Program – No Test through Preliminary levels

General event parameters:

1. Skaters may not enter both a Well-Balanced Free Skate event and a Test Track Free Skate event at the same non-qualifying competition.
2. Skaters will skate to the music of their choice. Vocal music is permitted at all levels.
3. Level will be determined by the highest Free Skate test passed. Skaters may compete at the highest level they have passed, or “skate up” to one level higher.
4. Minimum number of spin revolutions are in () following the spin description. Revolutions must be in position.
5. The following deductions will be taken:
 - 0.1 from each mark for each technical element included that is not permitted in the event description.
 - 0.2 from the technical mark for each extra element included.
 - 0.1 from the technical mark for any spin that is less than the required minimum revolutions.

2017-18	JUMP ELEMENTS	SPINS	STEP SEQUENCES
<p>NO TEST</p> <p>1:40 maximum</p> <p>*means element is required</p>	<p>Max 5 Jump Elements</p> <ul style="list-style-type: none"> • All single jumps allowed except for the single Axel <ul style="list-style-type: none"> ○ No single Axels, double, triple or quadruple jumps allowed ○ Number of single jumps (except single Axels) is not limited provided the maximum number of jump elements allowed is not exceeded • Max 2 jump combinations or jump sequences <ul style="list-style-type: none"> ○ Jump combinations limited to 2 jumps except that one 3-jump combination with a maximum of 3 single jumps is allowed ○ Jump sequences limited to a maximum of 3 single jumps 	<p>Max 2 Spins</p> <ul style="list-style-type: none"> • Spins may change feet and/or position • Spins may start with a flying entry • Min 3 revs. <p>These spins must be of a different character (For definition see U.S. Figure Skating rule 4103 (E))</p>	<p>Max 1 Sequence</p> <ul style="list-style-type: none"> • Step Sequence <ul style="list-style-type: none"> ○ Must use one-half the ice surface ○ Moves in the field and spiral sequences are allowed but will not be counted as elements ○ Jumps may be included in the step sequence
<p>PRE-PRELIMINARY</p> <p>1:40 maximum</p> <p>*means element is required</p>	<p>Max 5 Jump Elements</p> <ul style="list-style-type: none"> • All single jumps, including the single Axel, allowed <ul style="list-style-type: none"> ○ No double, triple or quadruple jumps allowed ○ Axel may be repeated once as a solo jump or part of a jump sequence or jump combination (maximum of 2 single Axels) ○ Number of single jumps is not limited provided the maximum number of jump elements allowed is not exceeded • Max 2 jump combinations or jump sequences 	<p>Max 2 Spins</p> <ul style="list-style-type: none"> • Spins may change feet and/or position • Spins may start with a flying entry • Min 3 revs. <p>These spins must be of a different character (For definition see U.S. Figure Skating rule 4103 (E))</p>	<p>Max 1 Sequence</p> <ul style="list-style-type: none"> • Step Sequence <ul style="list-style-type: none"> ○ Must use one-half the ice surface ○ Moves in the field and spiral sequences are allowed but will not be counted as elements ○ Jumps may be included in the step sequence

	<ul style="list-style-type: none"> o Jump combinations limited to 2 jumps except that one 3-jump combination with a maximum of 3 single jumps is allowed o Jump sequences limited to a maximum of 3 single jumps 		
<p>PRELIMINARY</p> <p>1:30 +/- 10 sec</p> <p>*means element is required</p>	<p>Max 5 Jump Elements</p> <ul style="list-style-type: none"> • 1 must be an Axel-type jump or a waltz jump* • All single jumps, including the single Axel, allowed. Only 2 different double jumps may be attempted (limited to double Salchow, double toe loop and double loop) <ul style="list-style-type: none"> o Double flip, double Lutz, double Axel, triple and quadruple jumps not allowed o An Axel plus up to two different, allowable double jumps may be repeated once (but not more) as solo jumps or part of a jump sequence or jump combination o Number of single jumps is not limited provided the maximum number of jump elements allowed is not exceeded • Max 2 jump combinations or sequences <ul style="list-style-type: none"> o Jump combinations limited to 2 jumps except that one three jump combination with a maximum of 2 double jumps and 1 single jump is allowed o Jump sequences limited to a maximum of 3 single or double jumps 	<p>Max 2 Spins</p> <ul style="list-style-type: none"> • Spins may change feet and/or position • Spins may start with a flying entry • Min 3 revs. <p>These spins must be of a different character (For definition see U.S. Figure Skating rule 4103 (E))</p>	<p>Max 1 Sequence</p> <ul style="list-style-type: none"> • Step Sequence <ul style="list-style-type: none"> o Must use one-half the ice surface o Moves in the field and spiral sequences are allowed but will not be counted as elements o Jumps may be included in the step sequence

SINGLES COMPULSORY MOVES

Event: INTRODUCTORY LEVELS COMPULSORY

Format: In simple program form, using a limited number of connecting steps, the skating order of the required elements is optional.

- To be skated on ½ ice.
- No music is allowed.
- The skater must demonstrate the required elements and may use any additional elements from previous levels.
- A 0.2 deduction will be taken for each element performed from a higher level.
- *Skaters may have the option to skate one level higher in compulsories than their free skate program.*

Level	Time	Skating rules/standards
Beginner	1:15 max.	<ul style="list-style-type: none">• Waltz jump• ½ jump of choice• Forward two-foot or one-foot spin - minimum three revolutions (free leg position optional)• Forward or backward spiral
High Beginner	1:15 max.	<ul style="list-style-type: none">• Toe loop jump• Salchow jump• Forward scratch spin - minimum three revolutions• Forward or backward spiral

Event: COMPULSORY MOVES

General event parameters:

1. No Test –Juvenile: Elements skated on ½ ice
2. Intermediate – Novice: Elements skated on full-ice
3. The skater must demonstrate the required elements (performed once only) and may use any additional elements from previous levels.
4. A 0.2 deduction will be taken for each element performed from a higher level.
5. Music is not allowed.
6. Skaters may compete at their test level or one level higher.

Level	Time	Skating rules/standards
No-Test	1:15 max.	<ol style="list-style-type: none"> 1. Loop jump 2. Jump combination to include a toe loop (may not use a loop or Axel) 3. Solo spin - sit <u>or</u> camel spin - minimum three revolutions 4. Spiral sequence, must include a forward and backward spiral. Additional spirals and balance moves may be included.
Pre-Preliminary	1:15 max.	<ol style="list-style-type: none"> 1. Toe Loop jump 2. Jump combination: single/single (no Axel) 3. Sit spin or camel spin - minimum three revolutions 4. Spiral sequence with one forward spiral and one backward spiral (any edge)
Preliminary	1:15 max.	<ol style="list-style-type: none"> 1. Single Lutz 2. Jump combination: single/single (may include Axel) 3. Back upright spin - minimum three revolutions 4. Forward inside spiral
Pre – Juvenile	1:15 max.	<ol style="list-style-type: none"> 1. Single jump (may include Axel) 2. Jump combination: single/single (may include Axel) 3. Layback spin or camel spin - minimum three revolutions 4. Step sequence - circular
Juvenile & Open Juv.	1:15 max.	<ol style="list-style-type: none"> 1. Single Axel 2. Jump combination: single/single or double/single 3. Layback spin or camel spin - minimum three revolutions 4. Step sequence – circular
Intermediate	1:30 max.	<ol style="list-style-type: none"> 1. Double Salchow or double toe loop 2. Jump combination: single/single or double/single 3. Flying spin, minimum five revolutions 4. Step sequence – straight line
Novice	1:30 max.	<ol style="list-style-type: none"> 1. Double loop 2. Jump combination: double/single or double/double 3. Flying spin - minimum five revolutions 4. Step sequence – straight line

SINGLES JUMPS CHALLENGE

Event: Jumps Challenge

General event parameters:

1. Each jump may be attempted twice; the best attempt will be counted.
2. Pre-juvenile and lower will be skated ½ ice; Juvenile – Novice will be skated on full ice
3. Jumps with an "*" must be preceded with connecting steps (intermediate – senior)

Level	Time	Skating rules / standards
Beginner	1:15 max.	<ol style="list-style-type: none"> 1. Waltz jump (from backward crossovers) 2. ½ flip or ½ Lutz 3. Single Salchow
High Beginner	1:15 max.	<ol style="list-style-type: none"> 1. Waltz jump (from backward crossovers) 2. Single Salchow 3. Jump combination – waltz jump-toe loop
No-Test	1:15 max.	<ol style="list-style-type: none"> 1. Single toe loop 2. Single loop 3. Jump combination – Any two ½ or single revolution jumps (no Axel)
Pre – Preliminary	1:15 max.	<ol style="list-style-type: none"> 1. Single toe loop 2. Single flip 3. Jump combination - Any two ½ or single revolution jumps (no Axel)
Preliminary	1:15 max.	<ol style="list-style-type: none"> 5. Single flip 6. Single Lutz 7. Jump combination – Any single jump + single loop (may be Axel)
Pre – Juvenile	1:15 max.	<ol style="list-style-type: none"> 5. Single Axel 6. Single or double jump 7. Jump combination – single/single (no Axel)
Juvenile & Open Juv.	1:15 max.	<ol style="list-style-type: none"> 5. Single Axel 6. Double Salchow 7. Jump combination – single/single or double/single (no Axel)
Intermediate	1:30 max.	<ol style="list-style-type: none"> 5. Single Axel 6. Double loop* 7. Jump combination – double/single (no Axel)
Novice	1:30 max.	<ol style="list-style-type: none"> 5. Double loop 6. Double flip* 7. Jump combination – double/double (may be double Axel)

SINGLES SPINS CHALLENGE

EVENT: Spins Challenge

General event parameters:

1. Spins may be skated in any order. Connecting steps are allowed, but will not be taken into consideration in scoring. Spins may not be repeated. Only required elements may be included.
2. All events are skated on ½ ice.
3. Minimum number of revolutions are noted in parentheses.

Level	Time	Skating rules / standards
Beginner	1:30 max.	<ol style="list-style-type: none"> 1. Upright one-foot spin (3) 2. Upright two-foot spin (3) 3. Sit spin (3)
High Beginner	1:30 max.	<ol style="list-style-type: none"> 1. Upright one-foot spin (3) 2. Upright two-foot spin (3) 3. Sit spin (3)
No-Test	1:30 max.	<ol style="list-style-type: none"> 1. Upright one-foot spin (3) 2. Upright two-foot spin (3) 3. Sit spin (3)
Pre – Preliminary	1:30 max.	<ol style="list-style-type: none"> 4. Upright one-foot spin (3) 5. Upright back scratch spin (3) 6. Sit spin (3)
Preliminary	1:30 max.	<ol style="list-style-type: none"> 8. Forward scratch to back scratch spin (3) 9. Combination spin with no change of foot (4) 10. Sit spin (3)
Pre – Juvenile	1:30 max.	<ol style="list-style-type: none"> 8. Camel spin (3) 9. Combination spin – camel to sit spin; no change of foot (6) 10. Forward to backward scratch spin (3 per foot)
Juvenile & Open Juv.	1:30 max.	<ol style="list-style-type: none"> 8. Sit spin (4) 9. Combination spin – with change of foot; optional change of position (4 per foot) 10. Girls – layback spin (4); Boys – camel spin (4)
Intermediate	1:30 max.	<ol style="list-style-type: none"> 8. Flying camel spin (5) 9. Sit spin to backward sit spin (4 per foot) 10. Combination spin – change of foot & change of position (4 per foot)
Novice	1:30 max.	<ol style="list-style-type: none"> 8. Choice of camel, sit or layback spin (6) 9. Camel spin to backward camel spin (4 per foot in position) 10. Combination spin – change of foot & two changes of position (2 per position & 5 per foot)

SHOWCASE EVENTS

Format: Groups will be divided by number of entries and ages if possible. Skaters must enter at the same level as their free skate event or highest test level of skater's in the group ensemble or production number. If a free skate event is not being entered, skaters must enter at their current test level or one level higher. Vocal music is permitted. 6.0 Judging will be used. Deductions will be made for skaters including technical elements not permitted in the event description.

Showcase categories may include:

- Levels can be subdivided, if necessary, depending on entry numbers and event set up
- Dramatic entertainment: Showcase program utilizing intense emotional skating quality to depict choreographic theme.
- Light entertainment: Showcase program emphasizing such choreographic expressive qualities such as comedy, love and mime while incorporating skating skills.
- Duets: Theatrical/artistic performances by any competitors.
- Mini production ensembles: Theatrical performances by three to seven competitors.
- Production ensembles: Theatrical performances by eight to 30 skaters. Theater On Ice teams are eligible as production ensembles. NOTE: Skaters may enter only one each duet, mini production or production event.

General event parameters:

Show costumes are permitted, as long as they do not touch or drag on the ice. Props and scenery must be placed and removed by unaided singles and duet competitors within one minute and by unaided ensemble contestants within two minutes for setup and two minutes for removal. A 0.2 deduction will be assessed by the referee against each judge's mark for each five seconds in excess of the time allowed for the performance, for handling props and scenery and for scenery assistance.

Performances will be judged from an entertainment standpoint, for theatrical qualities. Technical skating skills and difficulty will not be rewarded as such; however, skating must be the major element of the performance and be of sufficient quality to support the selected theatrical elements. Unintended falls, poorly executed skating elements and obvious losses of control will reduce contestant's marks. Jump difficulty is not rewarded in showcase; therefore jumps, if choreographed, should be performed with style, flow and confidence. Theatrical elements evaluated will include energy, poise, acting, pantomime, eye contact, choreography, form/extension and the use of props and ice.

* For specific guidelines regarding the conduct of Showcase competitions, refer to the Nonqualifying Showcase Guidelines posted on www.usfigureskating.org.

LEVEL	ELEMENTS	QUALIFICATIONS	PROGRAM LENGTH
Free Skate 3 – 6 / Beginner / High Beginner	3 jump maximum. ½ rotation jumps only, plus the following full rotation jumps: Salchow and toe loop.	May not have passed any official U.S. Figure Skating free skate tests.	Time: 1:30 max.
No Test / Pre-Preliminary	3 jump maximum. No Axels or double jumps permitted.	Must have passed no higher than U.S. Figure Skating Pre-Preliminary or Adult pre-Bronze free skate test.	Time: 1:30 max.
Preliminary	3 jump maximum. Axels are permitted, but no double jumps allowed.	Must have passed no higher than U.S. Figure Skating Preliminary free skate or Adult Bronze test.	Time: 1:40 max.